

## **ACCESSING SAFETY KNOWLEDGE (ASK) SHEET: *Confined Space – Permit Required***

A Permit Required Confined Space is one of the most dangerous working conditions. A Permit Required Confined Space is a confined area where a hazardous atmosphere exists or is likely to exist. Hundreds of workers die every year while in Permit Required Confined Spaces. Alarming 60% of the total fatalities are not the workers in the confined space but are the would be rescuers.

A confined space is defined as an area large enough to enter, having a limited means of access/egress, unnatural ventilation and not intended for continued human occupancy. Entering Permit Required Confined Spaces is sometimes necessary to access underground utilities. The following company requirements when working in Permit Required Confined Spaces include but are not limited to:

1. The air must be tested before entering. You will not be allowed to enter a Permit Required Confined Space if the air is tested and found to be hazardous. Ventilation equipment or respirators will be used to protect entrants from potential hazards.
2. The air must constantly be monitored while the confined space is occupied.
3. A trained “Attendant” must be present at all times while entrants are in the confined space. The Attendant must control who enters the confined space and require entrants to sign the permit. The Attendant must inform entrants of the hazards that could be present in the confined space.
4. Visual, voice or signal communications must be maintained between the entrants and the attendant.
5. Rescue equipment must be present and maintained at all times. Rescue equipment may include the use of a tripod, harness and lifeline as seen in (Figure 1). The attendant may also use a Self-Contained Breathing-Apparatus (SCBA) pictured in (Figure 2). The attendant must never enter a confined space without Self Contained Breathing Apparatus (SCBA).

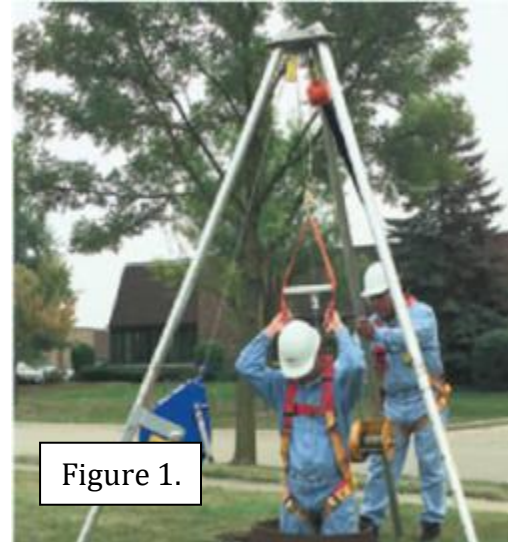


Figure 1.



Figure 2.

***Entering a Permit Required Confined Space is serious business.***

***Do not take any short cuts; it could cost you your life.***

PROVIDED BY ASA-HOUSTON CHAPTER SAFETY COMMITTEE – APRIL 2013

P.O. Box 924943 • Houston, Texas 77292 • 281.679.1877 • [asahouston.org](http://asahouston.org)

American Subcontractors Association-Houston Chapter is a collective voice for a diverse membership committed to quality, safety, and ethics in construction. ASA-HC advocates for legislative reform and provides educational opportunities for the subcontracting community.